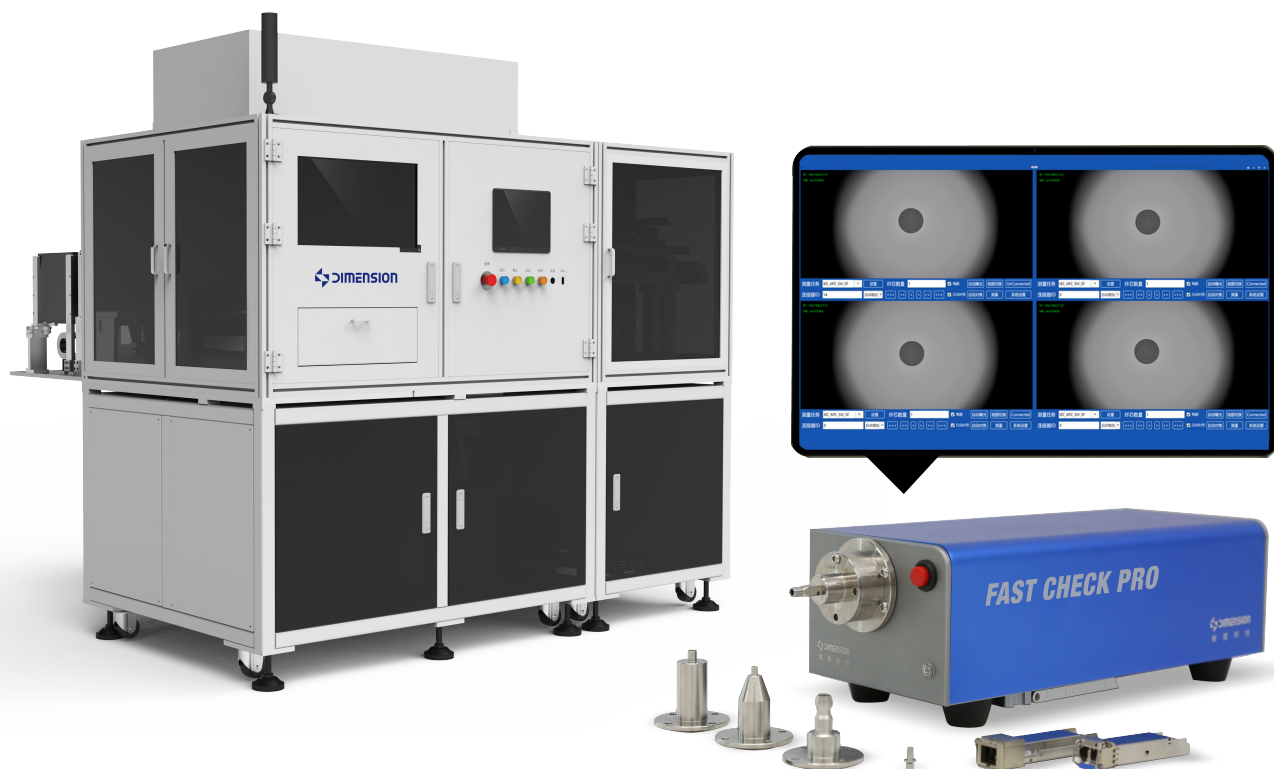


FastCheck Pro

Fully Automatic Fiber Endface Inspector



In order to meet the automation testing of optical components, modules, and connectors, and improve production testing efficiency. Dimension focuses on developing a FastCheck Pro Fully Automatic Fiber Endface Inspector, which is more suitable for automated production inspection systems. By adopting the latest combination of software and hardware, we aim to improve device clarity, enhance detection capabilities, achieve automatic centering, autofocus, autoexposure, automatic measurement, network communication, and IO control, making it an ideal choice for automated production lines.

Main advantage

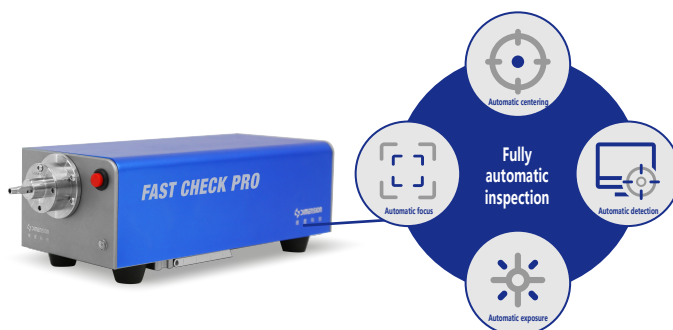
- Excellent detection ability to adapt to automation
- Fully automatic measurement
- Network control transmission data
- The image quality is clear

Main application

- Inspection of optical fiber connectors
- optical transceiver modules
- TOSA/ROSA components, etc.

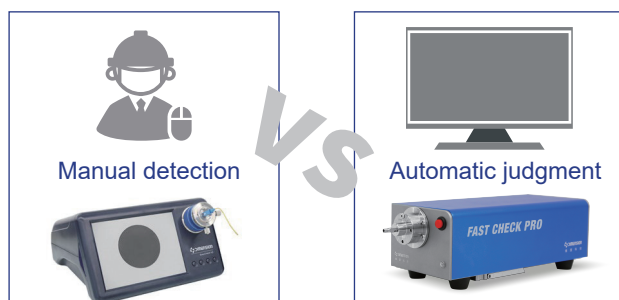
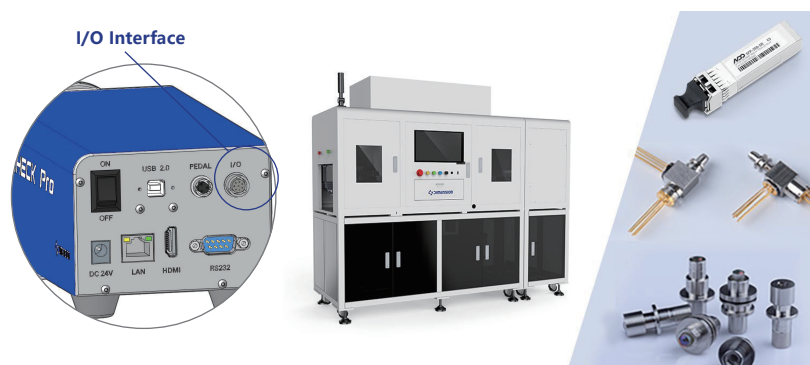
Fully automatic measurement

FastCheck Pro is a fully automatic end face detector with automatic functions such as automatic centering, automatic focus, automatic exposure, and automatic measurement.



Excellent detection ability to adapt to automation

FastCheck Pro aims to achieve efficient automated production inspection, with improved hardware and software capabilities, as well as synchronous improvements in detection capability and stability. By combining IO communication interface with automation equipment and Offsoon Pro, a fully automatic cleaning and detection system is formed, achieving automatic loading and unloading, automatic cleaning, automatic detection, automatic capping and other fully automatic functions.

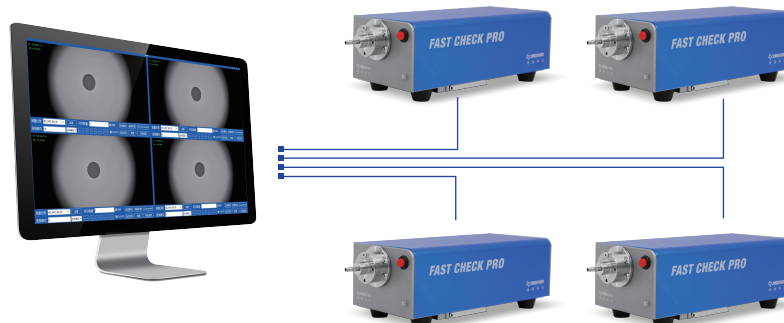


The image quality is clear

FastCheck Pro adopts a digital imaging solution, and the image quality reaches the same level as that of EasyCheck V2 series 200X. Encourage manual inspection during the manufacturing process of components and modules to realize automatic judgment and improve inspection efficiency.

Network control transmission data

FastCheck Pro supports network transmission, and the PC software can support the connection and operation of 4 FastCheck V2 devices at the same time. Say goodbye to the traditional one-to-one connection between the terminal tester and the PC via a data cable.



Performance parameter

Type	Parameter
Optical magnification	10X
Field of view size	960umX540um
Resolving power	1um
Measuring speed (without focus)	1s
Measurement method	Auto
Focus method	Auto
Operating temperature	-10°C~ 40°C
Storage temperature	-20°C~ 55°C
Voltage	DC 24V
Weight	2.7kg
Size	286mmX101mmX86mm